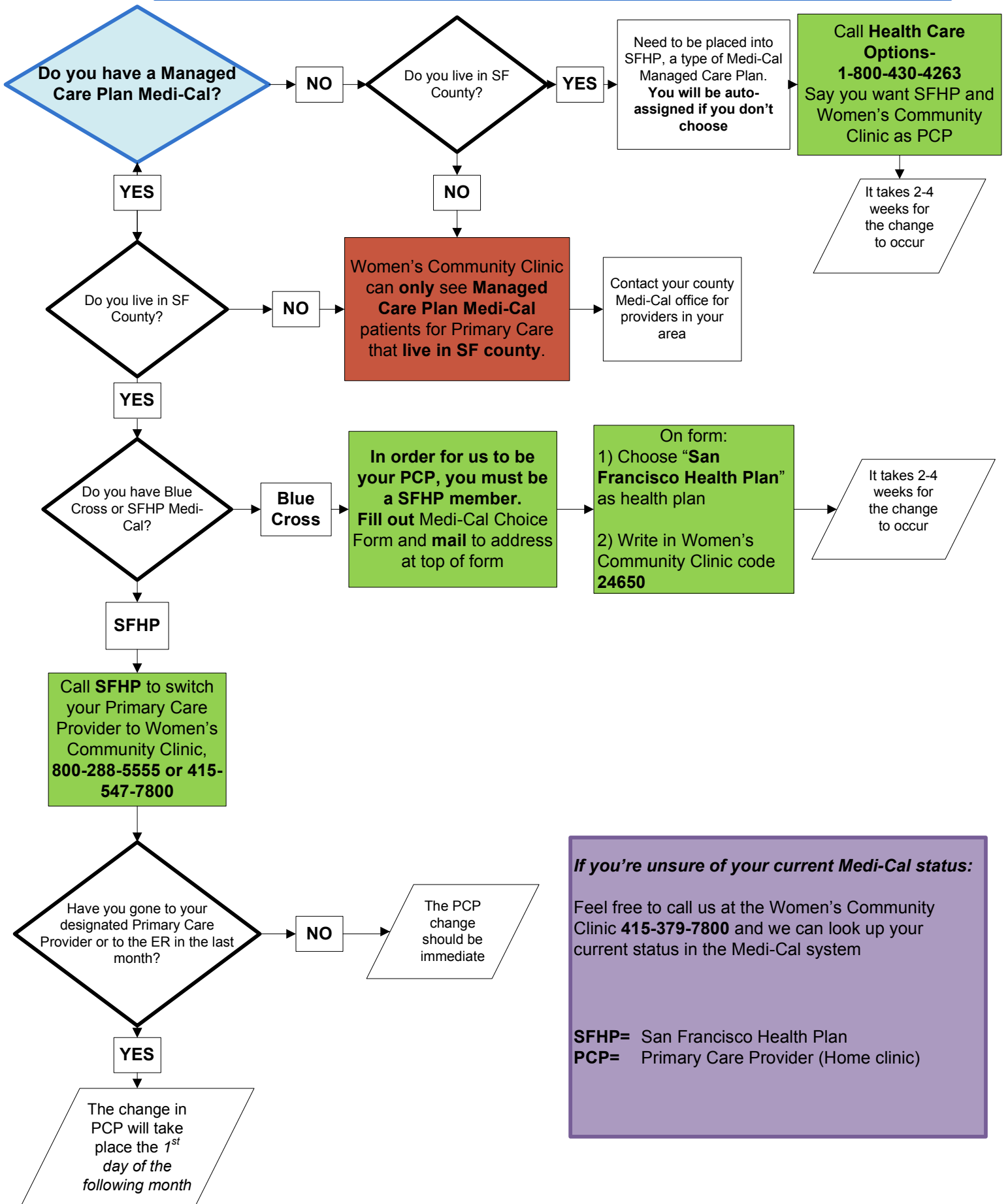


Medi-Cal Members: How to make Women's Community Clinic your Primary Care Provider



If you're unsure of your current Medi-Cal status:

Feel free to call us at the Women's Community Clinic **415-379-7800** and we can look up your current status in the Medi-Cal system

SFHP= San Francisco Health Plan
PCP= Primary Care Provider (Home clinic)